

apteryx

IMAGING




DataGrabber

Installation Instructions


1 [Download this DataGrabber trial file](https://www.apteryxware.com/files/updates/datagrabber/DataGrabberInstaller.exe) to the practice server.
(<https://www.apteryxware.com/files/updates/datagrabber/DataGrabberInstaller.exe>)

2 On the server, run the downloaded file from Step 1 as an administrator. Accept all default settings, unless specifically understanding and choosing otherwise. Take note of the installation path.
Example: C:/Program Files (x86)/Apteryx Imaging/DataGrabber/


3 Navigate to our [product updates page](#) and grab 3 things:
1) Under DataGrabber and OEM Versions, download the most recent upgrader of DataGrabber.

DataGrabber and OEM Versions 

2) Under Practice Management Bridges (DataDrills), download the link to the Practice Management Software that you will be using (you can see what Practice Management Software we support in [this article](#)).

Practice Management Bridges (DataDrills) 

3) Under Imaging Bridges (Launched Applications), download the link to the Imaging Software that you will be using [if using XVCapture/XVWeb, only the XVWeb link is necessary] (you can see what Imaging Software we support in [this article](#)).

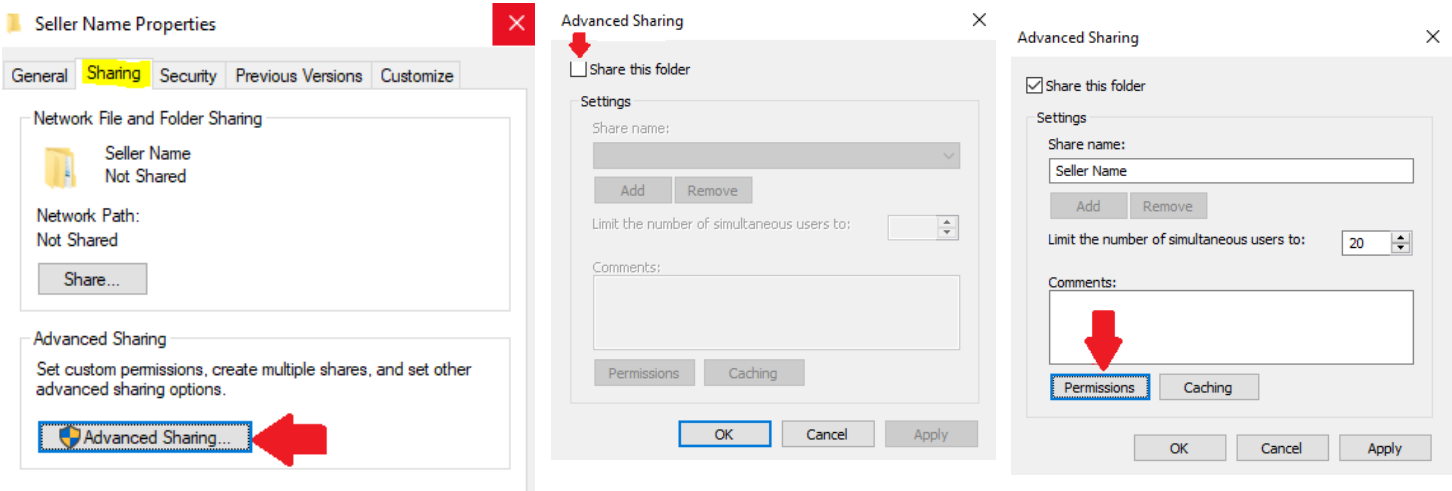
Imaging Bridges (Launched Applications) 

4 On the server, run all three downloaded files from Step 3 as administrator. Point each upgrader to the DataGrabber installation folder from Step 2. Each upgrader should finish stating “# file(s) successfully upgraded - No errors.”
Example:

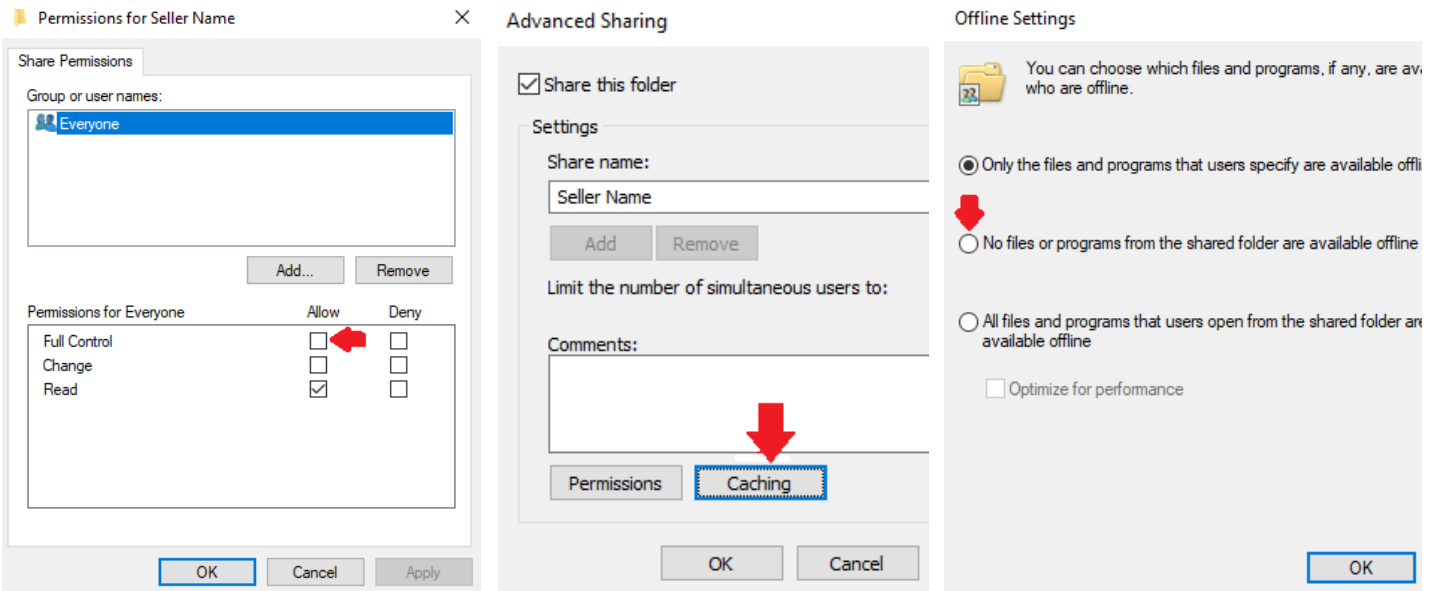
1 file(s) successfully upgraded
No errors.

CONTINUE 

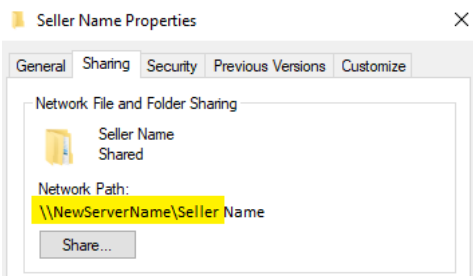
5 On the server, right-click on the DataGrabber folder and select **Properties**. On the window that pops up, select the **Sharing** tab and click on the **Advanced Sharing** button. Check the **Share this folder** box, then select the **Permissions** button.



From this screen, check the **Full Control** box under the Allow column for **Everyone**, and then click the **OK** button to return to the **Advanced Sharing** window. Select the **Caching** button and choose the second option, beginning with “No files...”. Press the **OK** button, and then the **OK** button again.



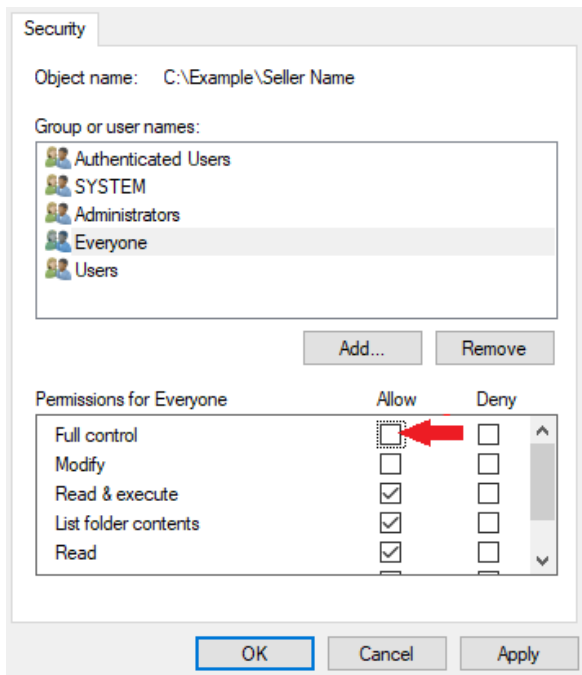
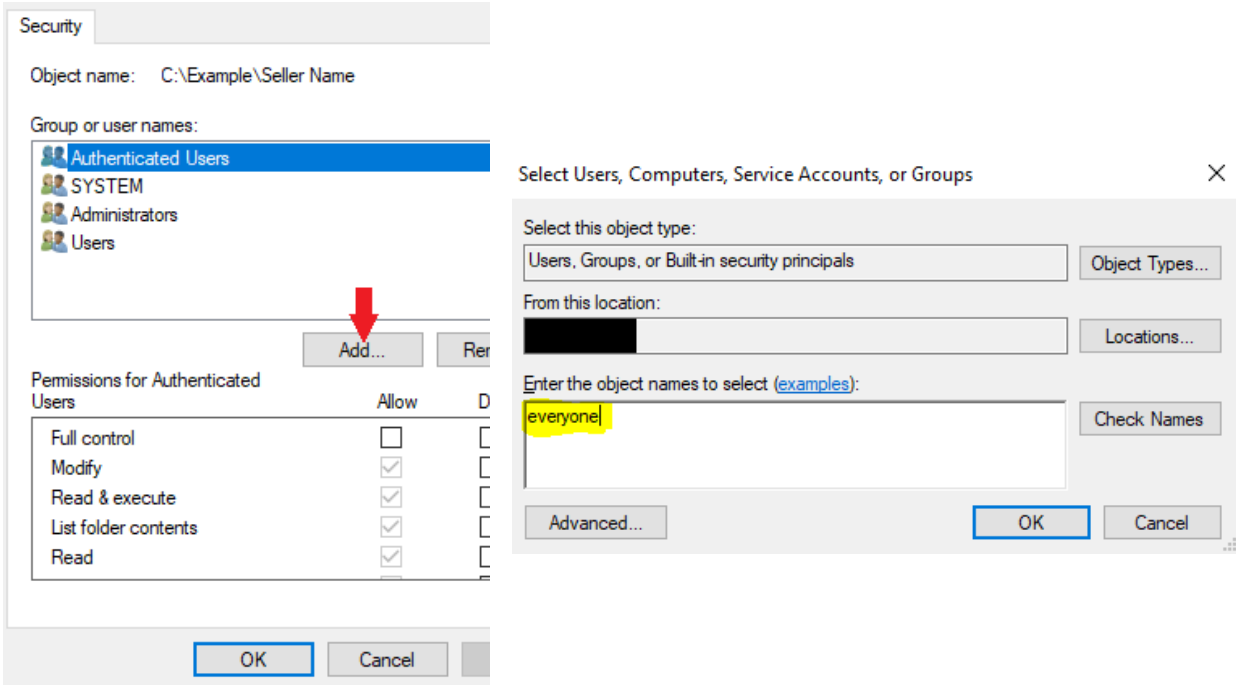
Note the shared network path now visible on the Sharing tab. **Do NOT** close out of the Property window and continue to Step 6.



CONTINUE

6

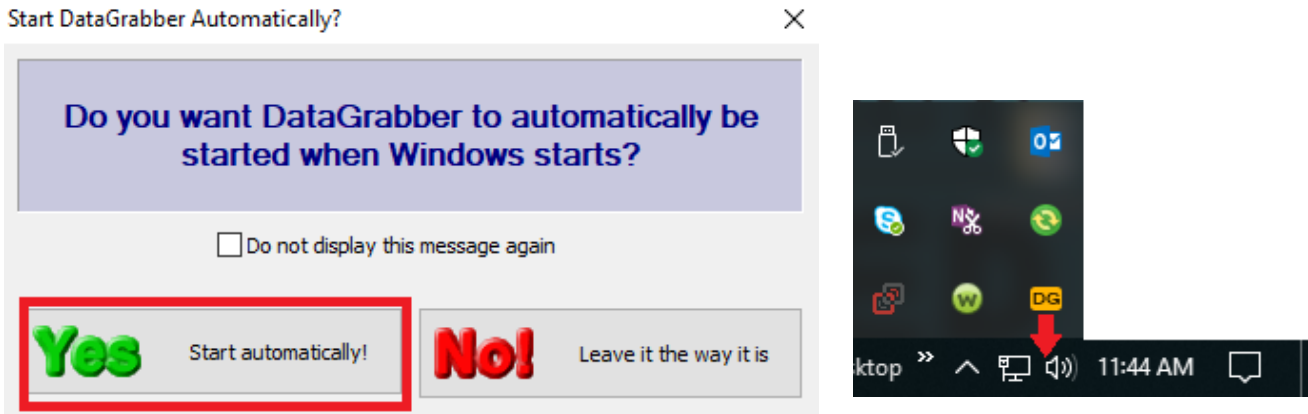
Within the DataGrabber folder's Properties window, select the **Security** tab and click on the **Edit** button. Click on the **Add** button. In the section labeled "Enter the object names to select", type in the word everyone and click the **OK** button. Check the **Full Control** box under the Allow column and click **OK**.



CONTINUE

7

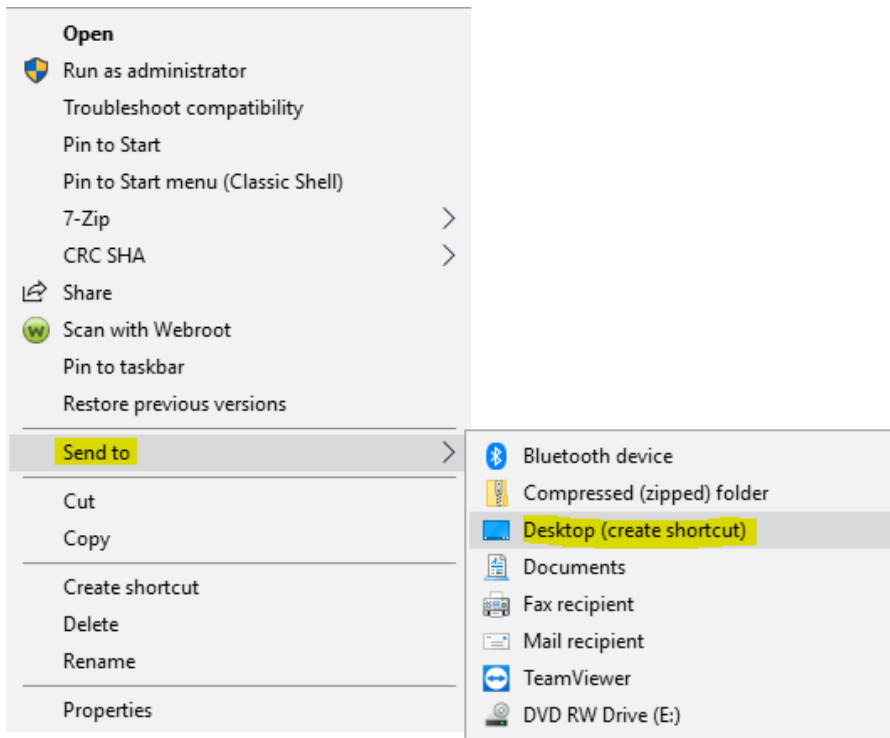
On each workstation, open Windows Explorer and navigate to the DataGrabber shared network path from the end of **Step 5**. Double-click on **DataGrabber.exe** to launch the program. A window should populate, asking if you want DataGrabber to automatically start with Windows, click on **Yes**. Then drag the **DG** icon from the hidden taskbar tray by the clock down to the visible icons to make DataGrabber always visible.



8

OPTIONAL

Right-click on **DataGrabber.exe** and select **Send to > Desktop (Create Shortcut)**. This allows for easy reinitializing of DataGrabber should the software crash for any reason.



CONTINUE

Useful Links

DataGrabber Trial Download Link

<https://www.apteryxware.com/files/updates/datagrabber/DataGrabberInstaller.exe>

Product Updates Page

<https://apteryximaging.zendesk.com/hc/en-us/articles/4412764698779>

Online Help Center

<https://apteryximaging.zendesk.com/hc/en-us>

(Article) Supported Practice Management and Imaging Software

<https://apteryximaging.zendesk.com/hc/en-us/articles/4407896424347>

(Article) DataDrill Installation

<https://apteryximaging.zendesk.com/hc/en-us/articles/4407896517531>

(Article) Imaging Bridge Installation

<https://apteryximaging.zendesk.com/hc/en-us/articles/4407896514843>

(Article) Workstation Install

<https://apteryximaging.zendesk.com/hc/en-us/articles/4407896293019>

(Article) Server Migration

<https://apteryximaging.zendesk.com/hc/en-us/articles/4407881736219>

Contact

General

Apteryx, Inc.
313 S High St Ste 200
Akron, OH 44308 USA
www.planetdds.com

Support Website

apteryximaging.zendesk.com

Telephone

330.376.0889

Hours

Monday-Friday, 9 am to 5 pm (EST)



Need Support? [Click here to submit a ticket](#)